

Easypack[®] packmaster[™] pro

Model 38I
Operating Manual
38-OM178-2
English



Contents

Safety Information	3
Description and Purpose of Machine	4
Specification and Installation	5
Machine Controls	6
Pre-start Checks	7
Loading Paper	8
Instructions for Use	9
Clearing Paper Jams	17
Troubleshooting	20
Declaration of Conformity	21



A brand of

Pregis
Protective Packaging Solutions

| 38-OM178-2 |

| www.pregiseu.com

Safety Information

It is important that this machine is installed, maintained and used correctly to avoid the risk of injury.

This machine contains dangerous voltages and rotating mechanical parts.



- Use the machine only for the purposes described in the Operating Manual
- This machine is to be used only by trained personnel
- Do not operate without the guards properly in place
- The machine is to be serviced or repaired only by Pregis Ltd

Always switch off the machine from the mains supply before freeing paper jams or lifting the top cover.

The machine is fitted with motor driven cut-off blades which operate automatically at the end of each cycle. Serious operator injury could result if hands are inserted through the outfeed flap. Care must also be taken to keep hands away from the paper entry slot to avoid paper cuts or friction burns to the hand.

The machine can be stopped at any time by pressing the red (0) switch. This cuts off the electrical supply to the control panel and motors.

For safety reasons a sensor on the outfeed flap prevents the machine from being started with the flap in the open position.

A safety switch also prevents the machine from being run with the top cover or the paper off-cuts door open. A neon indicator in the mains power switch illuminates when electrical power is connected.



- The machine uses a 230V(±10%), 50Hz, single-phase AC supply
- To protect against electrical shock, do not immerse the plug or mains cable in water or spray with liquids
- Unplug from the electrical supply when not in use
- Do not operate this machine with a damaged mains cable or plug
- To disconnect from electrical supply, grip the plug - do not pull on the mains cable

THIS MACHINE MUST BE EARTHED

The wires in the mains cable are coloured as such:

GREEN/YELLOW	EARTH
BLUE	NEUTRAL
BROWN	LIVE



A brand of

Pregis

Protective Packaging Solutions

38-OM178-2

www.pregiseu.com

Description and Purpose of Machine

The purpose of the Pregis Packmaster-pro machine is to produce tough, resilient cushions of recyclable packaging material.

The machine is loaded with either a single ply or a two ply roll of paper. As the material passes through the machine it is formed and shaped to produce a continuous cushion which is cut off to the selected length.

The cushion material has excellent bulk properties which make it ideal for void filling throughout the packaging operation.

The cushion is multi-cellular to resist impact forces and is readily moulded to cocoon even the most awkwardly shaped objects and protect them from damage in transit.

The machine is of rugged design and construction and its stainless steel finish is quickly wiped over for cleaning purposes. The sub frame is mounted on castors to facilitate movement to a new area.



The machine is designed to meet EC safety standards and requires connection only to a suitable electrical supply. Noise levels not to exceed 70dB(A).

Specification and Installation

Specification

Dimensions (machine)	1170mm (L) x 775 (W) x 545 (H)
Dimensions (frame)	950mm (L) x 840 (W) x 885 (H)
Weight (machine)	124kg
Weight (frame)	24kg
Voltage	230V (±10%), 50Hz
Max Power	400W
Machine Fuse	6.3A



Installation

The machine should be positioned in the packing area allowing ample space for loading the rolls of paper.

Activity around the machine should not put the mains supply cable and foot switch line in danger of sustaining damage or being a trip hazard.

Do not attempt to wheel the machine over uneven surfaces or at a speed greater than a slow walk.

The machine is top heavy when mounted on the frame

Temperature	Min 5°C
Humidity	10 to 90% RH
Vibration	Do not install the Machine in an area where it is likely to be subject to constant vibration
Shock	Do not drop the Machine or expose it to sudden shock
Atmospheric pollution	Do not install the Machine in an area that is subject to water hazards, condensation, excessive dust or other atmospheric contaminants
Location	It is important that the supporting floor is flat and level



Lifting/Transporting Instructions

The machine must be securely strapped to a pallet for transporting safely. The machine and frame weigh 148kg.



Connections

The machine must be connected to a 230V, 50Hz, 1-phase electrical supply. **THE MACHINE MUST BE EARTHED.** No other services are required. Maximum power consumption is 400W.

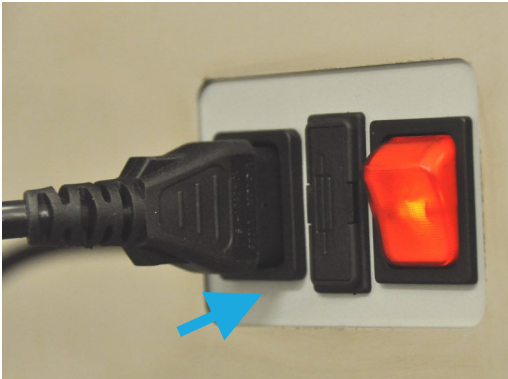
Machine Controls

Control Panel



'On' Button	Press the green 'On' button to switch the machine on. The display will illuminate.
'Off' Button	Press the red 'off' button to stop the machine in a controlled manner and switch the machine off. The display will show 5 'dots'.
'Home' Button	Stops the machine producing packs if running more than one, cancels 'A1' or 'A2' semi automatic operation, or restores the last set of values for quantity and length.
Preset Buttons	The three buttons can be programmed by the operator with commonly used quantity and length combinations.
Quantity Knob	This is used to select the quantity of packs required from 'A1', 'A2' and 01 to 99 or continuous.
Length Knob	The pack length can be adjusted from 25cm to 999cm long on standard machines.
'Run' Button	This button is pressed to initiate the cycle for single pack, semi-automatic and continuous operation
Fault Indication	If the machine stops unexpectedly and F1, F2, F3 or F4 are displayed, this indicates a fault (see troubleshooting, page 20)

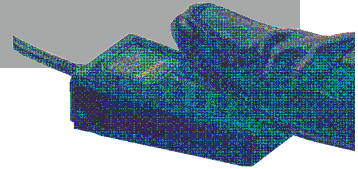
Pre-Start Checks



1. The machine is connected to the mains supply, switched on and the neon indicator is illuminated.



2. The footswitch tube is connected to the machine.



3. The paper cushion can discharge from the outfeed channel without any restriction.

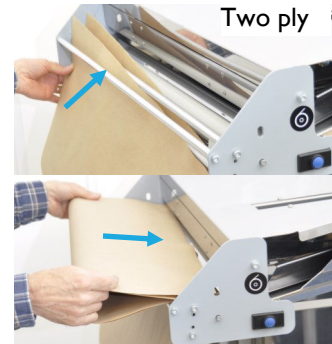


4. Switch the machine on by pressing the green 'I' button. The display will illuminate. If the display shows flashing 'dashes' the machine needs to be loaded with a roll of paper.

Loading Paper



1. Noting the unwind direction, slide a new roll of paper onto the paper arm until the sprung retaining latch springs up.



2. Pull approximately 70cm of paper from the roll.

For single ply paper, feed the sheet between the roller and inner guide rods as shown.

For two ply paper, feed the inner sheet between the roller and guide rods and the outer sheet between the inner and outer guide rods as shown.

Feed the sheet(s) of paper into the entry slot.



3. Rotate the wheels by hand for about half a turn to feed-in and grip the paper.



4. Press and release the blue feed button - the paper will load automatically.

The quantity display will flash 'Ld' whilst the paper is loading. Once loading is complete the display will revert to the previous settings.

NOTE: If the machine runs out of paper in auto batch mode, the machine will automatically continue to produce the remaining quantity of packs as soon as the paper has been loaded.

Instructions for Use



Do not insert hands through the outfeed flap inside the outfeed channel - risk of serious injury from motor driven cut-off blades.



Footswitch Operation

A paper cushion is generated continuously by holding down the foot operated switch. Releasing the footswitch stops the feed and causes the cushion to be cut off. When using the footswitch the length setting is overridden.



1. Remove any material from the outfeed channel and ensure the outfeed flap is closed.



2. Depress and hold down the footswitch. The length display will increment up as the pack is produced and the quantity display will change to a cycling symbol.

Release the footswitch when the required length of cushion is produced.

Remove the cushion from the machine.

Instructions for Use

Semi-automatic Operation

Every time a length of paper cushion is removed from the outfeed channel the machine produces another cushion. The length is set by the length knob.

The footswitch can be used in this mode to override the length setting and produce a longer length. When the machine starts to produce a paper cushion, press the footswitch to create the required length.

To stop the machine from producing further packs, press the white 'Home' button.



1. Rotate the quantity knob anti-clockwise to 'A1'.



2. Rotate the length knob to the required pack length.



3. Remove any material from the outfeed channel.
Press the black 'Run' button to initiate the cycle.



4. Remove the material from the outfeed channel and the machine will generate another pack.
Whilst not feeding a pack 'A1' will flash to show semi-automatic operation is active - pressing the 'Home' button cancels this.

NOTE: If the quantity is set to 'A2' two packs are produced, one after the other.



Instructions for Use

Single Pack Operation

Single packs are produced on demand to the set length.



1. Rotate the quantity knob to '01'.



2. Rotate the length knob to the required length.



3. Press the black 'Run' button to initiate the cycle.



4. The machine will produce one pack to the set length.

Instructions for Use

Automatic Operation

Packs are produced continuously to the set quantity and length.

To stop the machine whilst running a set quantity, press the white 'Home' button.

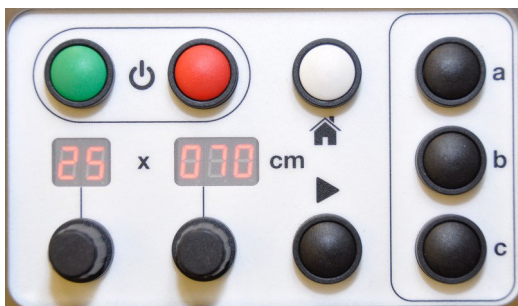
To restart press the black 'Run' button.



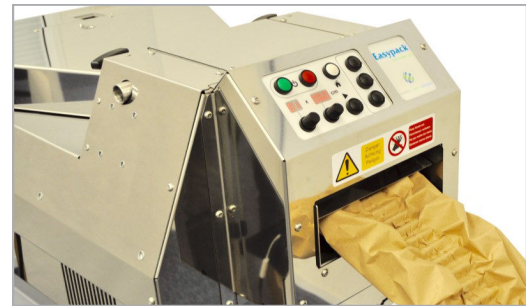
1. Rotate the quantity knob to the number of packs required (02-99).




2. Rotate the length knob to the required pack length.



3. Remove any material from the outfeed channel. **Check there is ample space for the packs to discharge from the outfeed channel.** Press the black 'Start' button to initiate the cycle.



4. The machine will produce the set number of packs continuously.

NOTE: If the quantity is set above 99, the display will show  and will run continuously until the paper runs out, or the machine is stopped.

Instructions for Use

Preset Button Operation

A preset quantity and length of pack are produced (three presets available).



1. Press one of the preset buttons (a, b or c) - the display will change to the preset value.



2. Press the black 'Run' button to initiate the cycle.



3. The machine will produce the preset quantity and length of packs to the set length.

Instructions for Use

Programming the Preset Buttons

The three preset buttons can be programmed simply by the operator.



1. Press and hold one of the preset buttons (a, b, or c) - the display will start flashing after 2 seconds.



2. Rotate the quantity knob to the desired number from 01 to 99 (whilst the display is flashing).



3. Rotate the length knob to the desired length (whilst the display is flashing).



4. Release the preset button to save the values - the display will flash twice before remaining on.

Instructions for Use

Programming the Preset Buttons for 'Instant' Operation

The three preset buttons can be set to produce the programmed values instantly when the preset button is pressed and released by the operator.



1. Press and hold *all three* of the preset buttons (a, b & c).



2. After 5 seconds a 'dot' will appear below the right hand digit of the length display.

When one of the presets is pressed and released the programmed quantity and length of packs will be produced instantly (without pressing the 'Run' button).

To change the preset button operation to require the 'Run' button to be pressed, press and hold *all three* preset buttons for 5 seconds until the 'dot' disappears.

Instructions for Use



1. The machine will only operate when the display is illuminated.

The machine will stop when the paper runs out. The display will change to flashing 'dashes' and the tail end of the paper will be automatically run out of the machine.



2. The machine will not switch on, or run with the paper off-cuts door open.



3. The machine will not switch on, or run with the top cover lifted up.



4. The machine will not switch on or start if the outfeed flap is open.



5. The machine can be stopped by pressing the red "O" button.



A brand of

Pregis
Protective Packaging Solutions

38-OM178-2

www.pregiseu.com

Clearing Paper Jams



For safety, switch off the mains supply to the machine before clearing paper jams.

Keep fingers away from the edges of the cut-off blades.

Paper Feed Jam Indicated by 'F2'



1. Unscrew the two black 'T' handles each side of the top cover until they swing down.



2. Lift up the top cover until it locks in position.



3. Cut the paper across the rods with a knife, at the infeed guide rods.

Lift the front end of the inner paper former and remove all paper.

Check that no paper pieces remain in the folding area, the crimping area and the outfeed channel.



4. Lift the top cover, press the release plunger in and lower the top cover.

Swing the black 'T' handles up and clamp down.



A brand of

Pregis

Protective Packaging Solutions

38-OM178-2

www.pregiseu.com

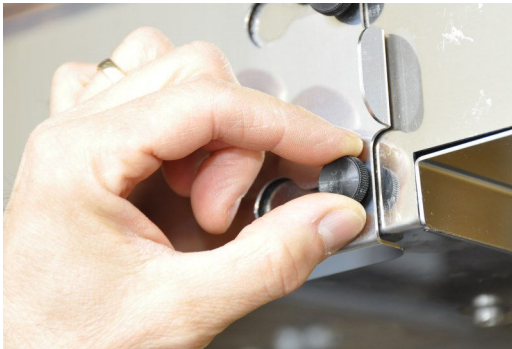
Clearing Paper Jams



For safety, switch off the mains supply to the machine before clearing paper jams.

Keep fingers away from the edges of the cut-off blades.

Paper Feed Jam Indicated by 'F3'



1. Slacken the two black knobs securing the paper off-cuts door under the outfeed channel.



2. Slide the door to the right to release the key tongue from the safety switch.



3. Lift the door forwards over the knobs to remove.



4. Locate the blade reset tool (supplied) on the crank nut.

Rotate the crank clockwise to the position shown.



A brand of

Pregis

Protective Packaging Solutions

38-OM178-2

www.pregiseu.com

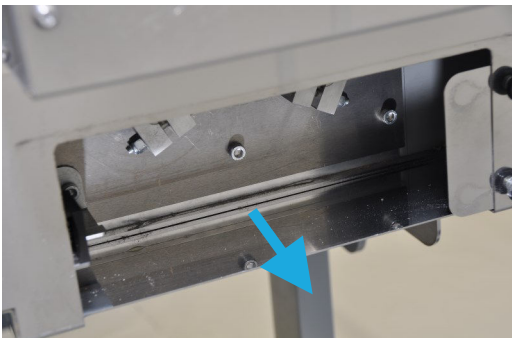
Removing Paper Snippets



1. Slacken the two black knobs securing the paper off-cuts door under the outfeed channel.



2. Remove the paper off-cuts door by sliding to the right and lifting forwards.



3. Remove any paper off-cuts from around the blade mechanism.



4. Replace the paper off-cuts door taking care to align the safety switch key.

Tighten the two black knobs.

Troubleshooting

Fault	Check
Power indicator not lit on mains switch of machine	<ul style="list-style-type: none"> • Machine is connected to the mains supply • Mains supply is switched on • Fuse in machine is okay • Fuse in mains plug is okay
Machine will not switch on (control panel)	<ul style="list-style-type: none"> • Power indicator is lit • Outfeed flap is closed • Paper off cuts door is closed • Top cover is closed
Machine stops with 'F1' displayed	<ul style="list-style-type: none"> • If paper has caught inside the machine (paper has not come out of the outfeed channel)
Machine stops with 'F2' displayed	<ul style="list-style-type: none"> • The paper has loaded correctly and a length of paper cushion has come out of the machine • If paper has jammed in the feed gears
Machine stops with 'F3' displayed	<ul style="list-style-type: none"> • If paper has jammed in the blades
Machine stop with 'F4' displayed	<ul style="list-style-type: none"> • The roll of paper is correct and free to rotate

NOTE: Once a jam has been cleared, press the green 'On' button to switch the machine on and clear the fault indication. In the case of a 'F4' fault, 'dashes' will cycle across the display for 30 seconds before the machine resets.

If the above information does not clear the fault, contact **Pregis** on **01438 740649** for further assistance. Please have the serial number of the machine available. This can be found on the back of the machine, behind the paper roll holder.

The machine is the property of Pregis Limited and under no circumstances is a customer to attempt to carry out any dismantling other than removal of the top cover or paper off-cuts door to clear a paper jam.

EC Declaration of Conformity

We declare that the following machinery complies with the essential health and safety requirements of the Machinery Directive 2006/42/EC, the Low Voltage Directive (LVD) 2014/35/EC and the Electromagnetic Compatibility Directive 2014/30/EC.

Manufacturer:	Pregis Ltd
Address:	Unit 1, The io Centre, Whittle Way, Arlington Business Park, Stevenage, Hertfordshire, SG1 2BD, England
Description of Product:	Packmaster-pro
Model No. & Serial No. :	381
The following transposed harmonised European Standards have been used:	
EN 12100: 2010	Safety of Machinery - Basic concepts, general principles for design
EN 13857: 2008	Safety of Machinery - Safety distances to prevent hazard zones being reached by upper and lower limbs
EN 60204-1: 2006	Safety of Machinery - Electrical equipment of machines - General requirements
EN 61000: 2007 (part 6-1)	Generic standards - Immunity for light-industrial environments
EN 61000: 2007 (part 6-3)	Generic standards -Emission standard for light-industrial environments

Jason Cox
Operations Director

09/06/2017

Signed on behalf of the manufacturer



A brand of

Pregis

Protective Packaging Solutions

38-OM178-2

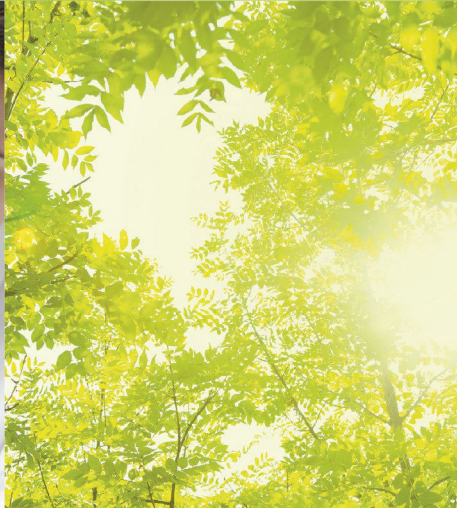
www.pregiseu.com

innovative • green • packaging

It is through our passion for innovation that we have, and will continue to provide high quality solutions that enable our customers to package their goods sustainably, safely, efficiently and cost effectively.

Sustainability is at the heart of everything that we do which is why, since 1992, we have provided our customers with 100% recycled packaging solutions that are 100% biodegradable and 100% recyclable.

Our packaging solutions enable our customers to transport their goods safely and sustainably, allowing them to pack more, spend less and meet their own environmental goals.



Easypack is a brand of Pregis Ltd



Pregis Ltd - EUROPEAN HQ

Pregis Limited, Unit 1, The io Centre, Arlington Business Park, Stevenage, Hertfordshire SG1 2BD

t: +44 (0) 1438 740649

e: info@pregiseu.com

w: www.pregiseu.com



Pregis's policy is one of continual improvement and specifications may change. E&OE. Protected by worldwide patents.

This paper is sustainable, bleach free and is FSC certified.
Members of the Woodland Trust.